

**APPENDIX J**  
**HISTORICAL SANBORN MAP REPORT**

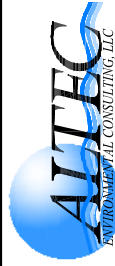
TITLE

SANBORN MAP  
DATE: 1935

LOCATION

PHASE I  
BIOMEDICAL RESEARCH FOUNDATION  
OF NORTHWEST LOUISIANA  
3.9-ACRE PROPERTY  
2005 GREENWOOD ROAD  
SHREVEPORT, CADDO PARISH, LOUISIANA

LEGEND



PROJECT NO. 18918

SCALE 1" = 120'

PAGE 1

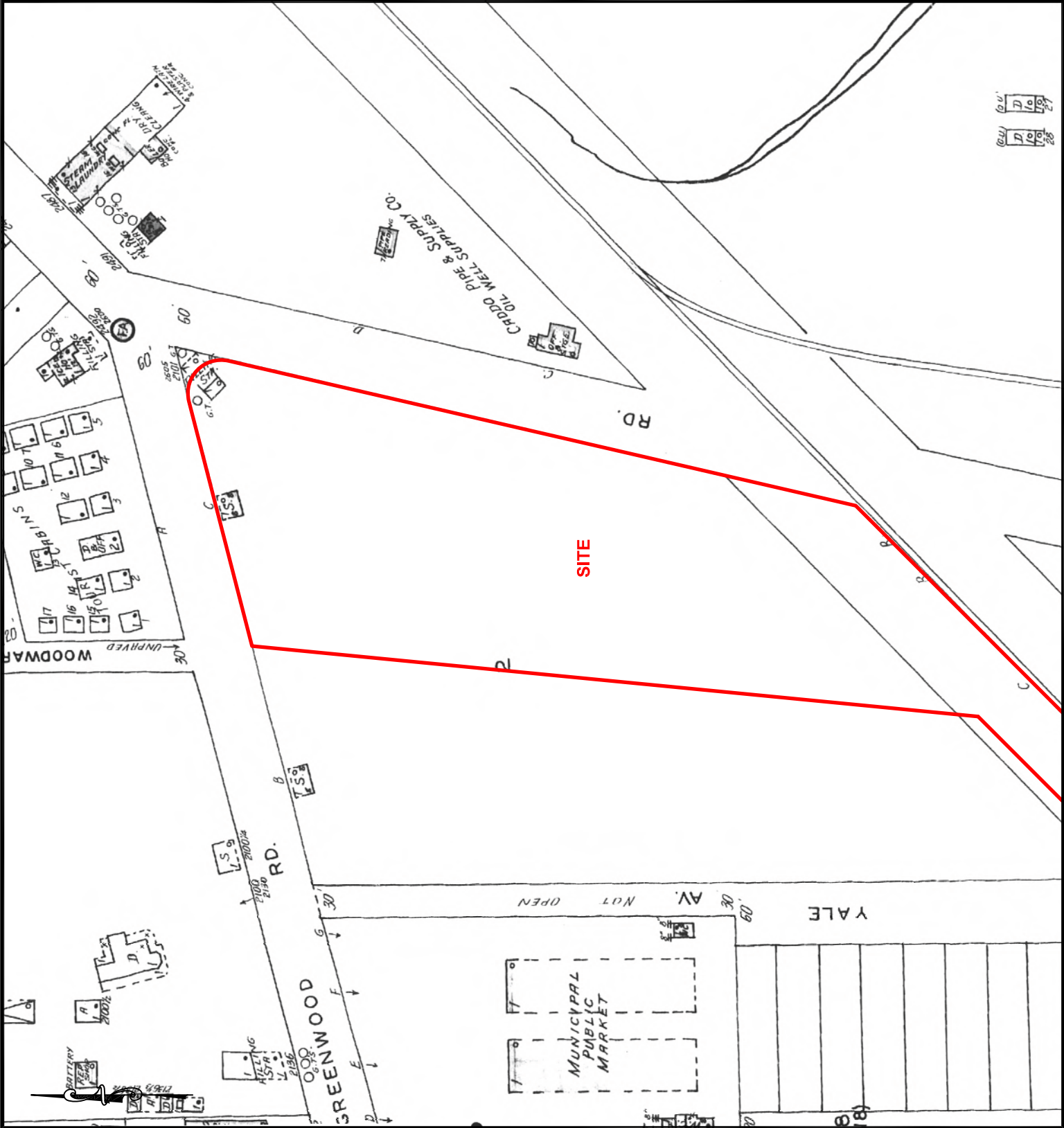
DRAWN BY LNJ

SHEET

DATE 08/21/12

A - 8.5 X 11

F:\Dwg\2012\18918\BiomedResearchFoun\Phase1.dwg



12	11	10	9	8	7	6	5	4	3	2	1
12	11	10	9	8	7	6	5	4	3	2	1

TITLE

SANBORN MAP  
DATE: 1961

LOCATION

PHASE I  
BIOMEDICAL RESEARCH FOUNDATION  
OF NORTHWEST LOUISIANA  
3.9-ACRE PROPERTY  
2005 GREENWOOD ROAD  
SHREVEPORT, CADDO PARISH, LOUISIANA

LEGEND



PROJECT NO. 18918

SCALE 1" = 120'

PAGE 1

DRAWN BY LNJ

SHEET

DATE A - 8.5 X 11 08/21/12

F:\Dwg\2012\18918\BiomedResearchFoun\PhaseI.dwg

